

Notice of Construction: Amherst Island Ferry Docks

Transition to the New Docks

The Frontenac II will soon start operating on the new docks.

The specific dates may change, based on weather, however the transition to the permanent docks is expected to occur soon. Notification of the exact date of the switch to the new permanent docks will be posted on our website and twitter.

What does this mean for you?

At Millhaven:

- Vehicles and passengers will access the ferry differently, as shown by the red arrows in the figure below. Specifically, marshalling will reverse directions and the current exit will become the entrance to the marshalling area. The route for exiting the dock is shown with green arrows.
- The marshalling area will remain in its current location but will be accessed from the opposite direction.
- There will be a new location for passenger pick-up and drop-off adjacent to the marshalling area just west of the new permanent dock.
- Parking will be relocated and will accommodate five to ten (5-10) vehicles and will be expanded when possible.

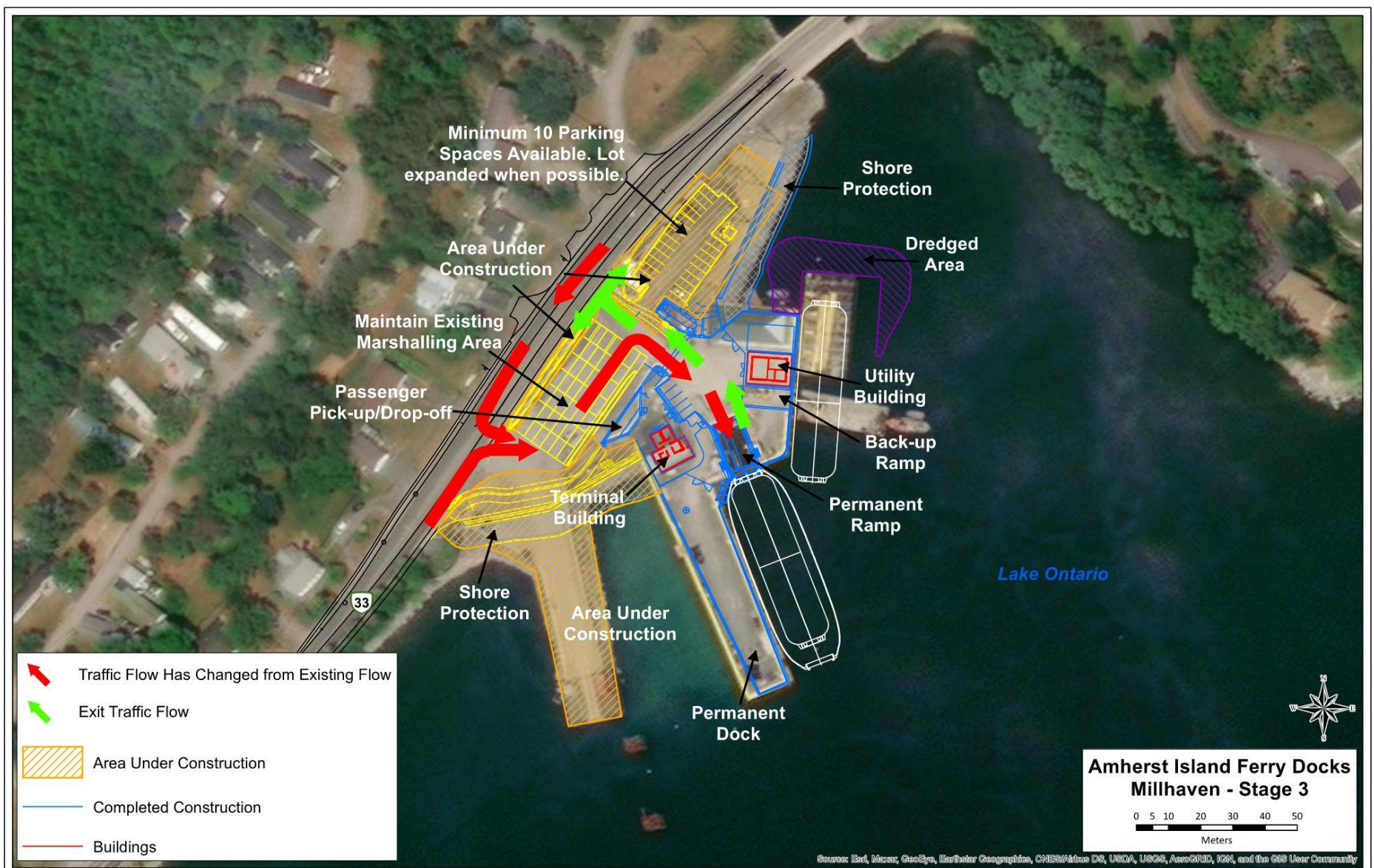
At Stella:

- Vehicles and passengers will access the ferry differently, as shown by the red arrows in the figure on the reverse of this page. The route for exiting the dock is shown with green arrows.
- Fifteen (15) parking spaces will be made available and will be expanded when possible.
- The marshalling area will be relocated and can be accessed by continuing straight off Stella 40 Foot Road towards the new permanent docks.
- The public boat launch (see figure below) will be inaccessible at times.

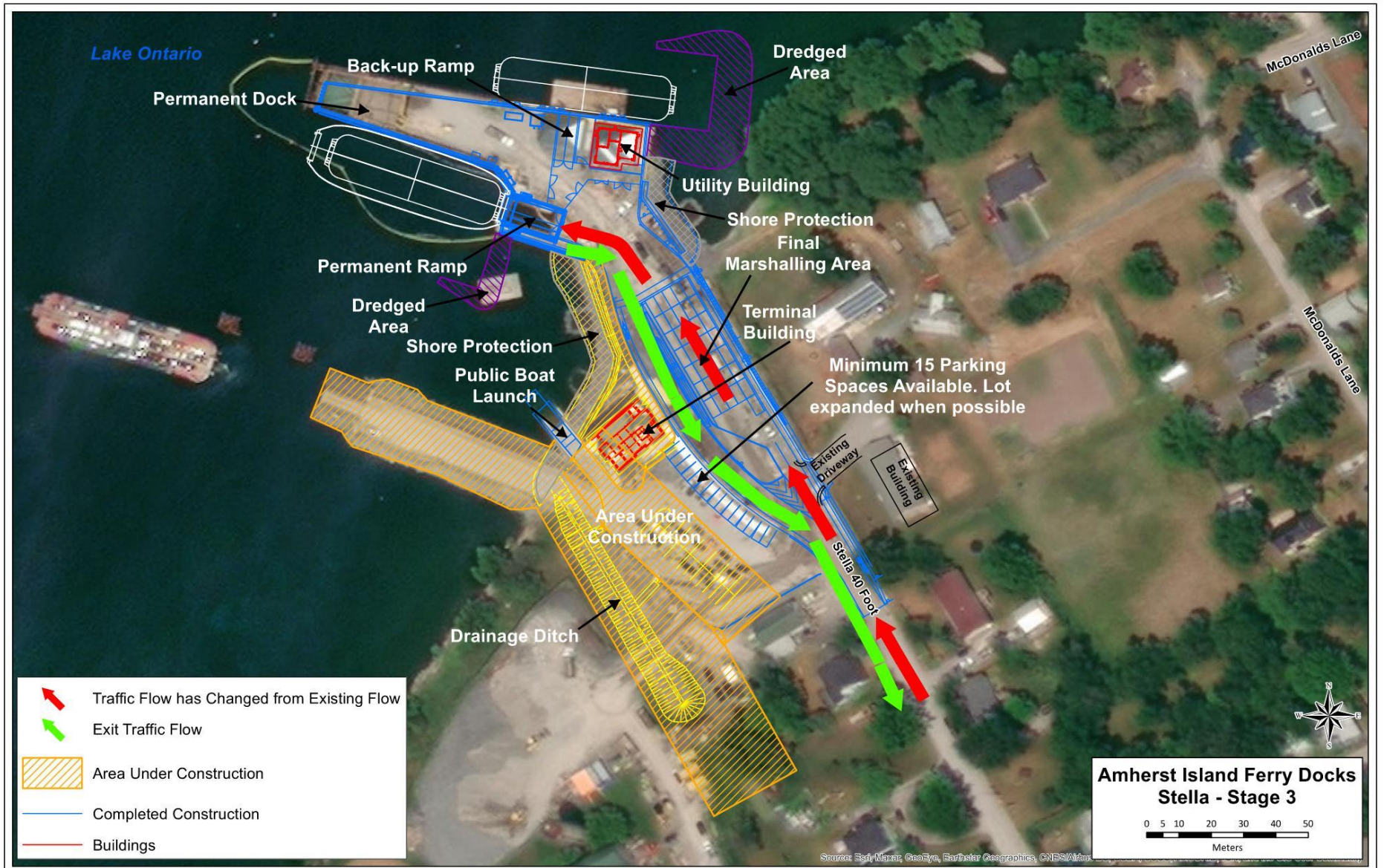
At Both Terminals:

- Vehicles will access the ferry by continuing to drive straight on and off at the new end-loading docks.
- Flag persons will be in place for the first two days following the transition to help ensure a smooth transition.
- **The ferry will continue to run on the regular schedule.**
- **Ferry user parking will be restricted to designated areas only.**

Millhaven – Parking & Access: Please Follow Signs



Stella – Parking & Access: Please Follow Signs



Construction Schedule (Timing is Subject to Change)

Fall 2020

- Both docks transition from the temporary dock to the permanent dock.

Fall 2021 to Spring 2022

- Temporary docks are removed.
- Buildings will be completed, final parking arrangement and permanent separations between pedestrians, vehicles and cyclists implemented
- Final clean-up and restoration take place

Contact Us

Comments or questions can be submitted to the Project Team at www.amherstislandferrydocks.ca or directly to the contacts below.

Follow us on twitter for updates on construction activities:
@A_I_ferrydocks

Mike Graham
Project Manager
Rankin Construction Inc.
104 County Road #4
Millhaven, ON K0H 1G0
Tel: 613-483-2161
Email: mgraham@rankinconstruction.ca

Pat Carroll
Contract Services Administrator
Ministry of Transportation
Eastern Region
1355 John Counter Blvd.
Kingston ON K7L 5A3
Tel: 613- 547-1798
Email: Pat.Carroll@ontario.ca